



## Sarah M. DePasquale

December 15, 1916 - June 21, 2016

### DePasquale

Sarah M. DePasquale, a resident of Pennsauken, passed away on June 21st at the age of 99. Sarah was born in Maple Shade and was a long-time employee of Campbell Soup Co. Sarah was the beloved wife of the late Angelo DePasquale. Loving mother of Jeanne Rizzo, Robert (Joanne DiBartolo) and Richard (Pam). Sarah is also survived by 5 grandchildren, 13 great grandchildren and 3 great-great grandchildren. Relatives and friends are invited to Sarah's Life Celebration Friday starting 10AM at Inglesby Givnish's of Maple Shade 600 E. Main Street. Services will follow at 11AM. Interment Calvary Cemetery. In lieu of flowers donations in Sarah's name may be made to Lighthouse Hospice, CHA Foundation, 1040 N. Kings Highway, Cherry Hill NJ 08034. To Share your fondest memory of Sarah please visit [www.GivnishFuneralHome.com](http://www.GivnishFuneralHome.com)

# Cemetery Details

## Calvary Cemetery

Route 38 and Cuthbert Boulevard  
Cherry Hill, NJ 08034

# Previous Events

## Gathering of Family and Friends

JUN 24. 10:00 AM - 11:00 AM (ET)

Givnish Funeral Home Maple Shade  
600 E Main St  
Maple Shade, NJ 08052  
(856) 779-7900  
info@givnish.com  
<https://www.givnish.com>

## Life Celebration service

JUN 24. 11:00 AM (ET)

Givnish Funeral Home Maple Shade  
600 E Main St  
Maple Shade, NJ 08052  
(856) 779-7900  
info@givnish.com  
<https://www.givnish.com>

# Tribute Wall



“ *Givnish Funeral Home created a Tribute Video in memory of Sarah M. DePasquale*



---

**Givnish Funeral Home** - June 23, 2016 at 08:55 AM



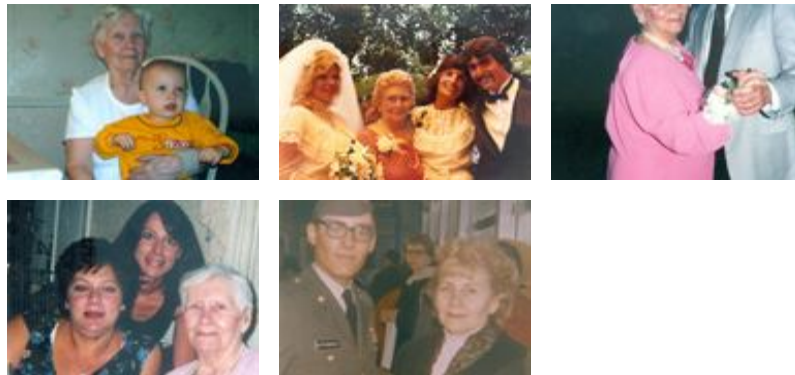
“ *Sarah M. DePasquale*

---

September 09, 2022 at 01:27 AM



“ *20 files added to the album Life Tributes*



---

**Givnish Funeral Home** - June 23, 2016 at 01:03 PM



“ 104 files added to the album *LifeTributes*



---

**Givnish Funeral Home** - June 23, 2016 at 08:35 AM